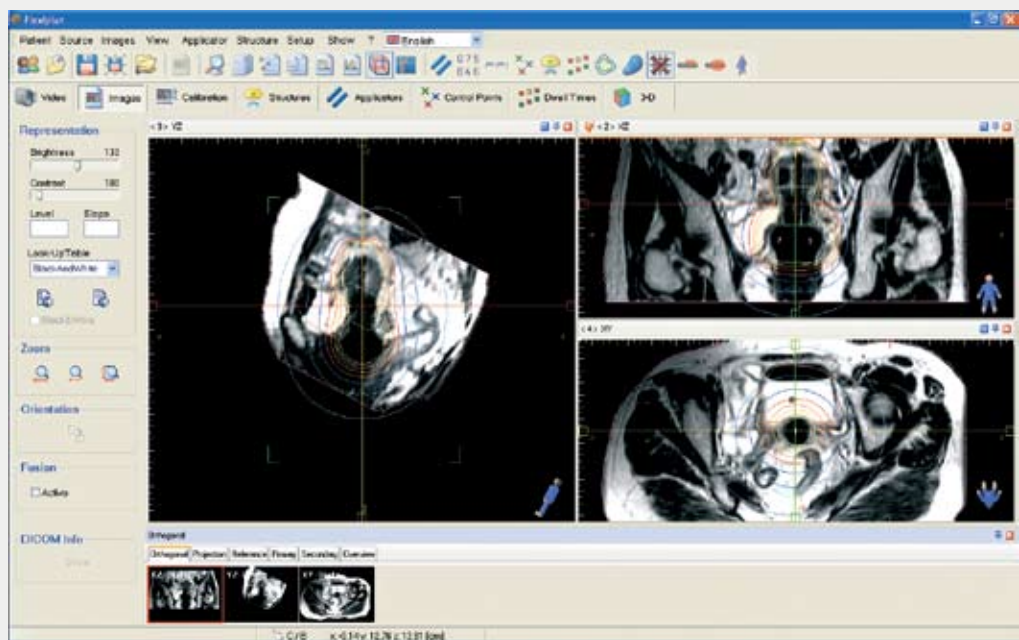
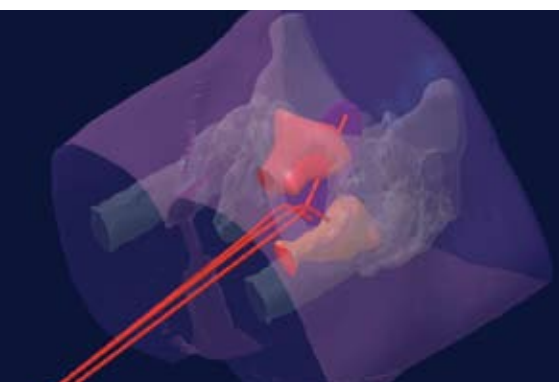


## Flexiplan 3D Brachytherapy Planning

- Smart applicator library
- Intuitive user interface
- Fast 3D contouring
- Real time planning
- Dicom RT
- 24/7 support
- PC-based

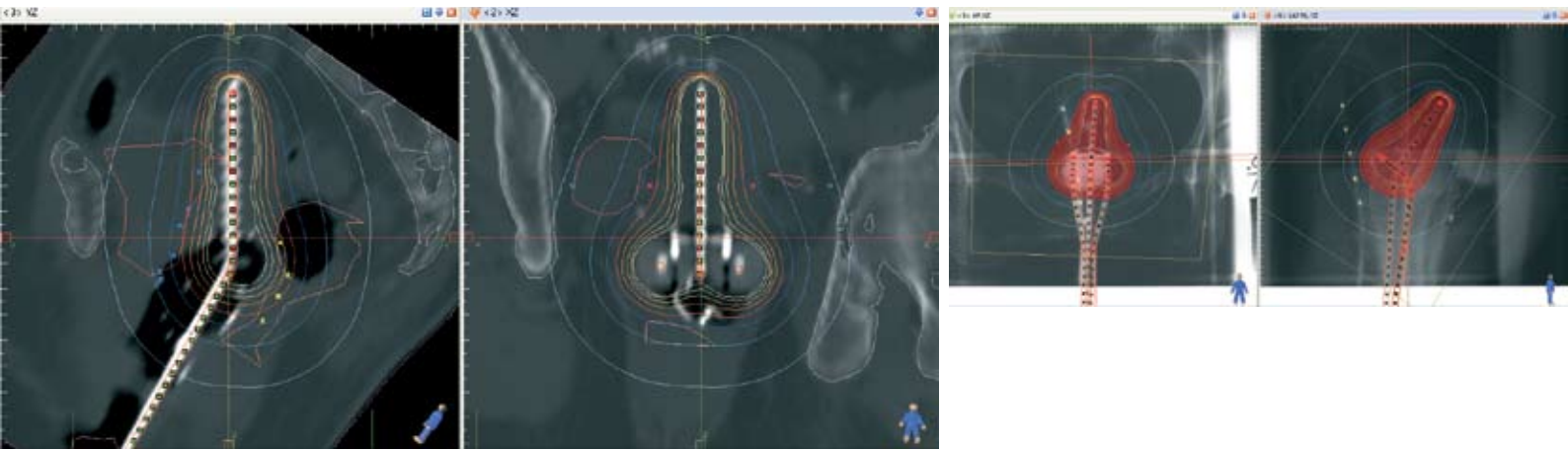


*Today's planning can be faster, more flexible and precise than ever before. Flexiplan provides you with benefits you need to see it to believe.*



Flexiplan will save you time, effort and enhances the safety of your practice. With our Flexiplan wizard and our intuitive, absolute-value measurement system you can eliminate human errors.

Applicator implants can now be quickly reconstructed with only a few mouse clicks. The smart applicator library helps to get solutions fast. The dose shaper tool was especially designed to easily optimize the dose to the target and critical organs by hand. It is possible to fuse images of different modalities to help you get the best possible dataset for precise and safe treatments.



**00-60-001 Flexiplan 3D (image based 3D brachytherapy planning system & users license)<sup>3</sup>**

**Consisting of:**

- Flexiplan 3D user license offering an image based brachytherapy treatment planning
- Hardware: PC, Windows XP, 2 x 19" monitor, contouring tablet
- Import of DICOM RT struct and DICOM-3 compatible images to reduce treatment planning time
- Export of treatment data via DICOM RT Plan to communicate with any DICOM RT compatible system and DICOM RT Dose export for performing dose comparison or dose addition.
- Fast & easy to use brachytherapy planning system
- 2D planning based on reconstructed films (Isocentric, reconstruction box, variable angle)
- 3D planning based on CT, MRI or US images (film scanner or DICOM-3 compatible)
- Semi automatic fusion MR, CT, US images
- Applicator database, user editable
- Optimization based on (multiple) dose points or on geometry
- Intensity modulated brachytherapy (IMBT) fulfilling multiple dose constraints
- Dose volume histograms
- Manual dose contour editing (dose shaper)
- Extensive, user customizable treatment plan printout
- 3D dose evaluation
- Action Undo possibility
- Automatic dwell position & time activation within a volume
- User manual
- For regular updates ask for our update contracts

**Optional:**

- 00-60-002 Flexiplan 3D (second license for same clinic)**
- 00-60-005 Flexiplan 3D+ (image based 3D including real time prostate module & users license)**
- 00-60-015 Flexiplan 3D+ (second license for same clinic)**

**Flexiplan accessories:**

- 00-60-006 Semi-orthogonal reconstruction frame (65 cm) with markers & cassette holder**  
(Frame works with a 14" x 17" X-ray cassette)
- 00-60-009 Laser printer black & white**
- 00-60-010 Laser printer colour**
- 00-60-011 Touch screen monitor 21"**
- 00-60-008 Film scanner for X-ray films**  
(The Film scanner consists of 2 components, an A3 document scanner and a film reader)

<sup>3</sup> 510(k) pending

## Flexiplan 3D+ Real-time HDR Brachytherapy Planning

- All-in-one PC-based solution
- Includes all Flexiplan benefits
- Real-time dose volume histograms (DVH)
- Fast live image capture
- Full 3D imaging



***Save time and improve accuracy of your prostate HDR treatment procedure. Guided by ultrasound imaging, you can create your patient plan during the surgical application of the prostate implant.***

The Flexiplan Real-time HDR module offers you all the Flexiplan benefits. It also gives you the enhanced features you need to perform real-time planning based on ultrasound imaging: real-time image capture, needle placement guidance, isodose overlays, optimization and more. You will benefit from the same Flexiplan intuitive user interface, its wizard, the metric measurement system

(0-reference), the quick and easy-to-use applicator library, the 3D dose shaper and customizable toolbars. Flexiplan also offers a range of state-of-the-art graphical and planning tools; viewing in coronal, sagittal, transversal and oblique view; and all the reporting features you expect from an innovative planning system.

**00-60-005 Flexiplan 3D+ (image based 3D including real-time prostate module & users license) (CE label)**

**Consisting of:**

- Flexiplan 3D+ user license offering an image based brachytherapy treatment planning
- Contouring tablet
- 3D ultrasound imaging, controlled by the stepper encoder
- A full 3D image set within 8 seconds (at 1 mm distance)
- Automatic recognition of catheters / needles on ultrasound images (available in future version)
- Automatic interpolation of contours
- Auto-activation dwell positions in VOI (+ / - user defined margin) + manual activation
- Supports US scanners with PAL or NTSC video output
- Supports biplanar transrectal ultrasound probe
- Stepper encoders for position feedback
- Real-time visualization of the needle placement during the implantation process
- Create a conformal treatment plan during the implant procedure
- 3D ultrasound control of needle insertion
- 3D imaging of needles, template grid, source placement and isodose curves
- Manual and automatic anatomy based needle placement (available in future version)
- Real-time placement of needles over pre-defined virtual needle
- User defined templates and on-screen adjustment of the pre-planning
- Isodose overlays on 2D ultrasound images
- Output to Flexitron and DICOM RT Plan to interface with other remote afterloaders
- Compatible with range of different ultrasound units
- User manual
- Full implementation of AAPM TG-43 protocol
- Automatic isodose curves update
- Values of isodose lines displayed in percentage or absolute dose values
- Optimization techniques:
  - Dose point and anatomy based
  - Geometrical
  - Graphical
- Real-time dose volume histograms (DVH):
  - Natural DVH
  - COIN
  - Cumulative
  - Differential
- 3D real-time visualization of the target and surrounding organs

**Flexiplan accessories:**

- 00-60-006 Semi-orthogonal reconstruction frame (65 cm) with markers & cassette holder**  
(Frame works with a 14" x 17" X-ray cassette)
- 00-60-009 Laser printer black & white**
- 00-60-024 Inkjet printer color**
- 00-60-011 Touch screen monitor 21"**
- 00-60-008 Film scanner for X-ray films**  
(The Film scanner consists of 2 components, an A3 document scanner and a film reader)